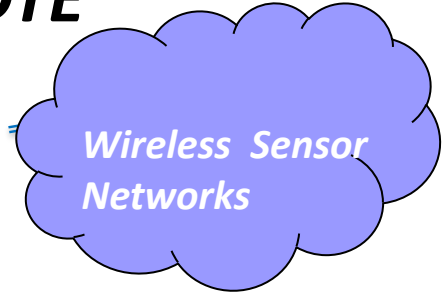




Application Note:
AN_RF_005Ver 1.0
BeanGateway & Data Terminal
Equipment Interface

RS232 Interface with a DTE



RS232 (RTU/ASCII Format)

Ethernet –TCP/IP

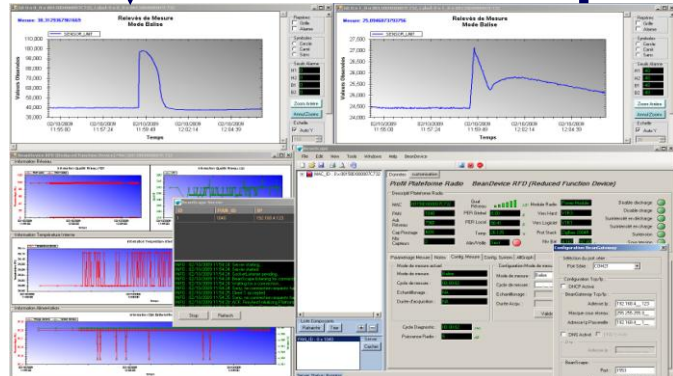
Data Acquisition frame

Network Diagnostic Data frame

Over-the-air configuration (OTAC) frame



Data Terminal Equipment



BeanScape® WSN Manager
(installed on PC/Notebook/IT Server)

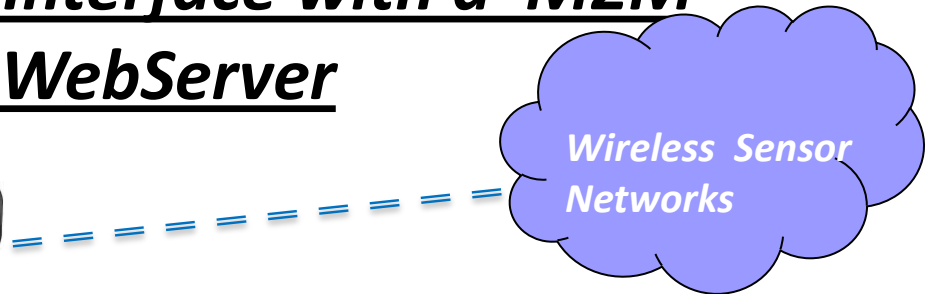
This interface can be used during WSN Configuration

GSM/GPRS Interface with a M2M

WebServer

Wireless Sensor Networks

GSM/GPRS



Ethernet –TCP/IP

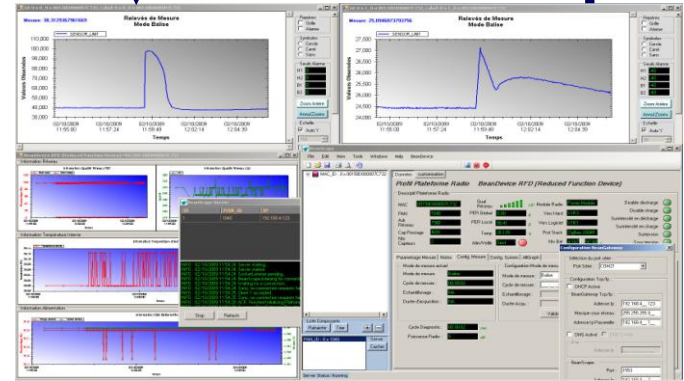
Data Acquisition frame &
Network Diagnostic Data
frame

Network Diagnostic
Data frame

Over-the-air
configuration (OTAC)
frame



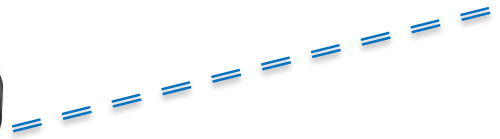
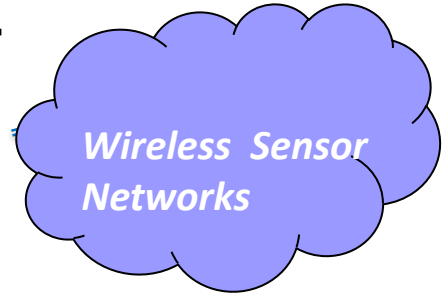
M2M Web Server



BeanScape® WSN Manager
(installed on PC/Notebook/IT Server)

This interface can be used during WSN Configuration

Ethernet & TCP/IP Interface



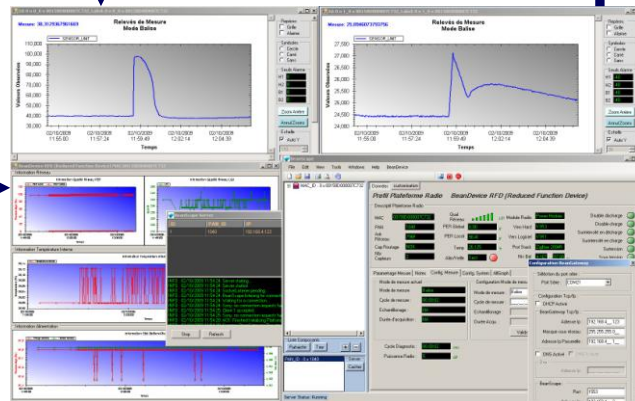
Ethernet –TCP/IP

Data Acquisition frame & Network Diagnostic Data frame

Over-the-air configuration (OTAC) frame



**PC, Notebook
or IT Server**



BeanScape® WSN Supervision



Ethernet –TCP/IP & OPC

