

OneSense®, the turnkey end-to-end solution for all your industrial Remote Asset Monitoring and Telemetry projects !

Whether you work in Energy, Environment, Industry or Healthcare, OneSense® will be your cost-effective tailor-made M2M solution...



A unique partnership...

OneSense® was designed upon the technology partnership established between Beanair and Vertical M2M R&D teams. Beanair provides its expertise in Zigbee wireless sensor network products and architectures while Vertical M2M brings its deep knowledge in M2M* applications, in order to offer to industry professionals complete innovative telemetry services :

- Consulting
- Engineering
- Pilot project
- M2M application development
- Sensors' delivery
- Wireless modules and telecom gateways
- Telecom infrastructure
- Web services
- Service operations
- Technical support

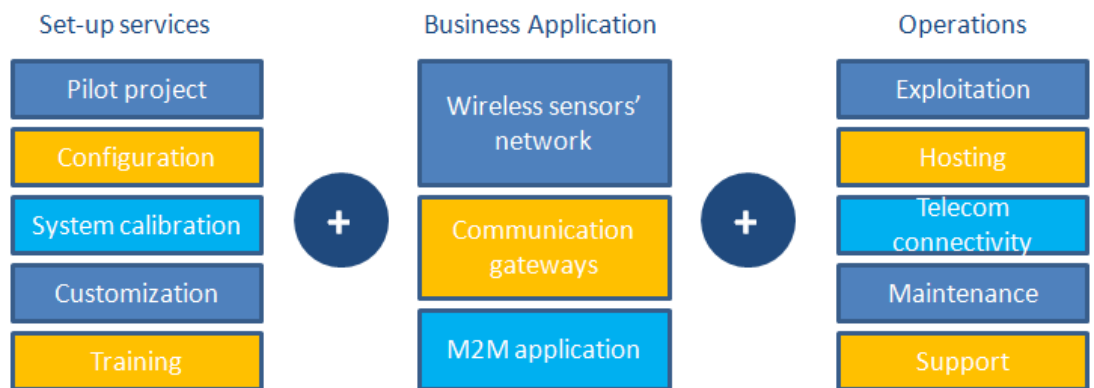
*« Machine-to-Machine (M2M) combines ICT (Information & Communication Technologies) with smart communicating objects in order to allow these objects to interact with an organization's information system without human interference »

(FING, 2006)

Why choose OneSense® offer ?

- You are looking for a turnkey Remote Asset Monitoring solution ?
- You don't have time or internal human resources to build from scratch a telemetry solution, validate and test it ?
- You are willing to outsource telecom infrastructure and operations for such a service ?
- You want to rely on an open standard solution ?
- You want to control costs as well as your project agenda ?
- You telemetry needs may evolve while using the system ?
- You are willing to work with skilled partners ?

OneSense®, a packaged offer with a very simple business model

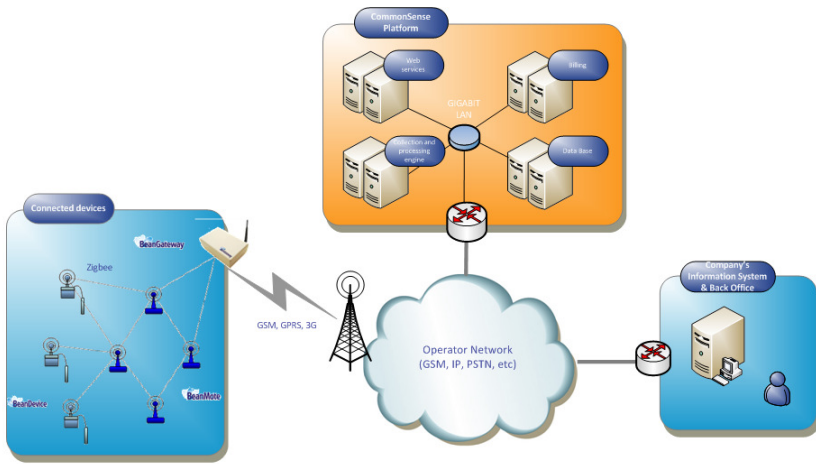


- A **set-up service package** matching your project requirements
- A **complete product delivery** of all needed wireless sensors, M2M Zigbee-based modules and communication gateways (IP, GSM...)
- A **monthly subscription per site** providing access to the business application and all related services (exploitation, hosting, support, security, maintenance, network connectivity...)

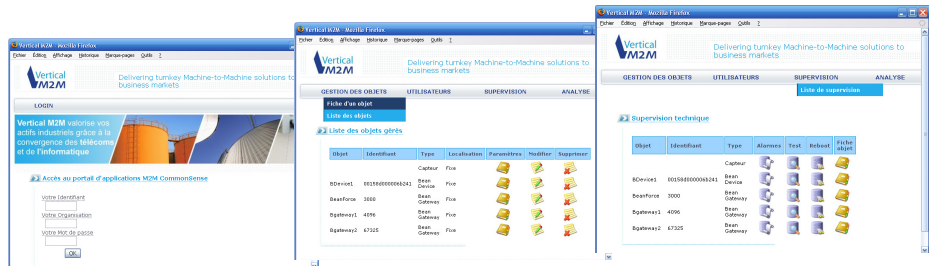


An open architecture for a quick and successful launch of your project...

- Low-consumption standard radio protocol, Zigbee/IEEE 802.15.4 is fully dedicated to measurement & telemetry applications
- Ad-hoc wireless network architecture : up to 155 sensors per network, self-configuration of the sensor network, resiliency...
- A wide range of sensors pre-integrated : force, slope, accelerometer, temperature, pressure, analog measures...
- Fully secured server farm, hosted in highly available telecom data-centers
- Simultaneous handling of thousands of customer sites, remote assets and measure sensors
- Single management through one web portal of several M2M applications



... relying on a powerful software environment, with a broad range of pre-integrated features, easily accessible through a secured web-based portal. This framework helps us rapidly design all M2M applications you may need.



Some concrete benefits with OneSense®

One-stop-shopping : OneSense® is a global solution that combines skills in measurement/telemetry, embedded systems, telecom and information systems

Interoperability and standard-abiding solution : our offer rely on proven standards technologies (XML, SOAP, Java, etc)

Integratable to your own Information System d'information : thanks to its open APIs (provisioning, billing, ...), our solution can seamlessly be integrated within your Information System

Evolving solution : with OneSense® you can easily add new M2M applications at a fraction of the cost

Reversibility : at anytime, you can decide to buy the OneSense license and operate your own service platform at your premise

Cost-effective solution : with its unique time-to market , its standard-based scalable architecture and its predictive business model, you can immediately benefit from a powerful solution with an excellent Return On Investment !

